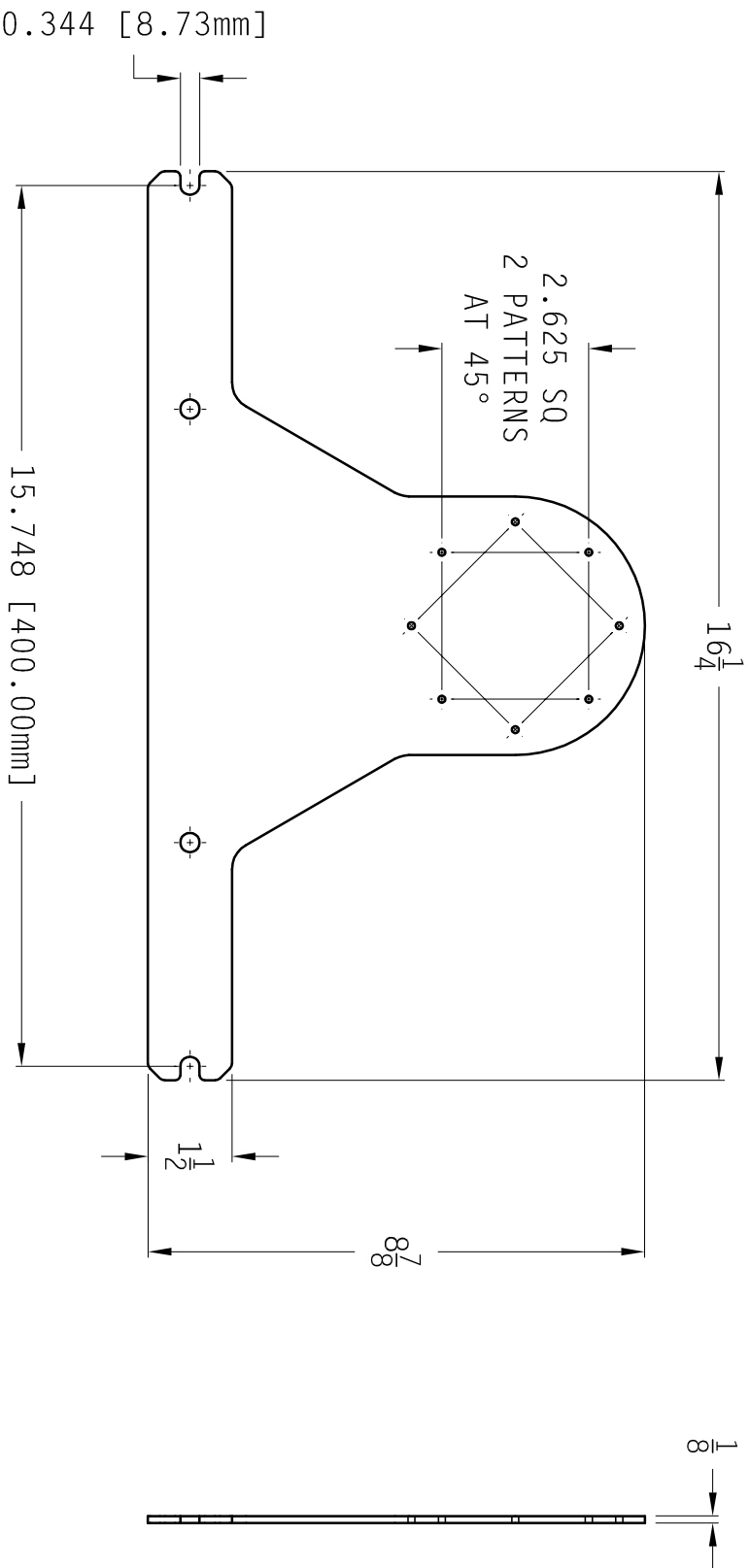


ITEM NO	PART NUMBER	DESCRIPTION	SPECIFICATION	MFG
1	13999A10	RPI COVER VESA-E	-	QSINE
2	92005A521	PAN HEAD SCREW M8X1.25 - 12 L	PLATED STEEL	MCMMASTER



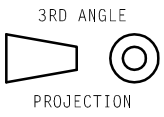
WEIGHT (LBS)	MATERIAL	HEAT TREATMENT	FINISH	NO	BY	DATE	REVISION
~	11495D10-1	BLACK				QSINE	10,020

UNLESS NOTED OTHERWISE ALL TOLERANCES AS FOLLOWS

DECIMALS: 0 ± .060
.00 ± .030
.000 ± .010

FRACTIONS ± 1/32
WELDMENTS & CASTINGS ± 1/16
ANGULAR ± 1°

REMOVE ALL SHARP CORNERS AND BURRS



NOTE: THE INFORMATION CONTAINED ON THIS DOCUMENT IS NOT TO BE REPRODUCED OR DISCLOSED WITHOUT THE WRITTEN PERMISSION OF QSINE CORPORATION LIMITED. ALL RIGHTS TO THE INFORMATION CONTAINED ON THIS DOCUMENT ARE RESERVED BY QSINE CORPORATION LIMITED

DRN	MDG	CHK	SCALE	DWG NO	SHEET	OF
KS	280CT13		~	13999A10	1	1

