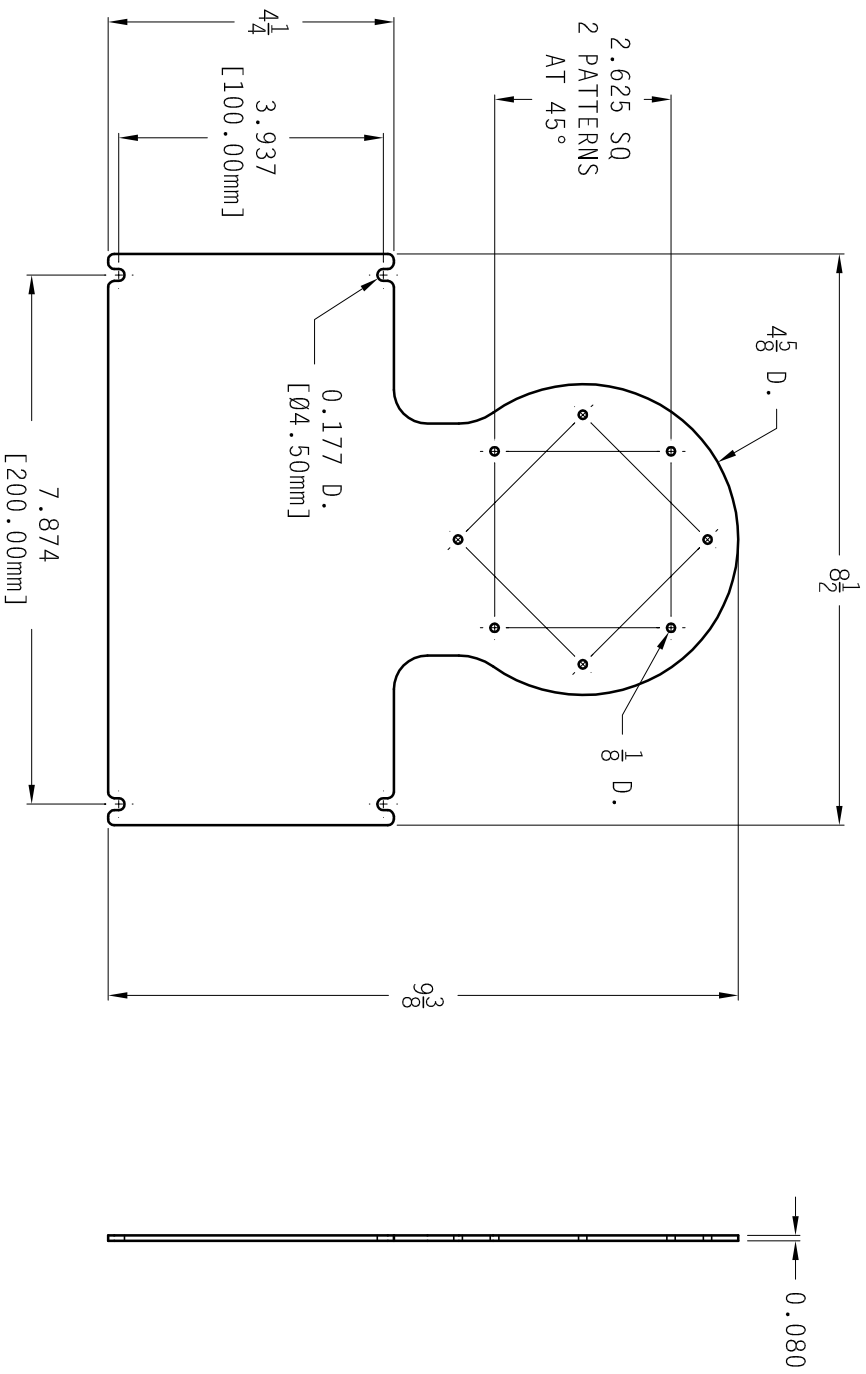


ITEM NO	PART NUMBER	DESCRIPTION	SPECIFICATION	MFG
-0				
QTY				
1	13997A10	RPI COVER VESA-C	-	QSINE
4	92005A220	PAN HEAD SCREW M4X0.7 - 10 L	PLATED STEEL	MCMMASTER



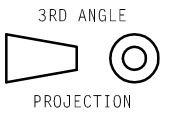
WEIGHT (LBS)	MATERIAL	HEAT TREATMENT	FINISH	NO	BY	DATE	REVISION
~	11494D10-4		BLACK				10,020

UNLESS NOTED OTHERWISE ALL TOLERANCES AS FOLLOWS

DECIMALS: 0 ± .060  
.00 ± .030  
.000 ± .010

FRACTIONS ± 1/32  
WELDMENTS & CASTINGS ± 1/16  
ANGULAR ± 1°

REMOVE ALL SHARP CORNERS AND BURRS



NOTE: THE INFORMATION CONTAINED ON THIS DOCUMENT IS NOT TO BE REPRODUCED OR DISCLOSED WITHOUT THE WRITTEN PERMISSION OF QSINE CORPORATION LIMITED. ALL RIGHTS TO THE INFORMATION CONTAINED ON THIS DOCUMENT ARE RESERVED BY QSINE CORPORATION LIMITED



DRN	KS	SCALE	DWG NO
M06	280CT13	~	13997A10
CHK	APP	SHEET	OF
		1	1