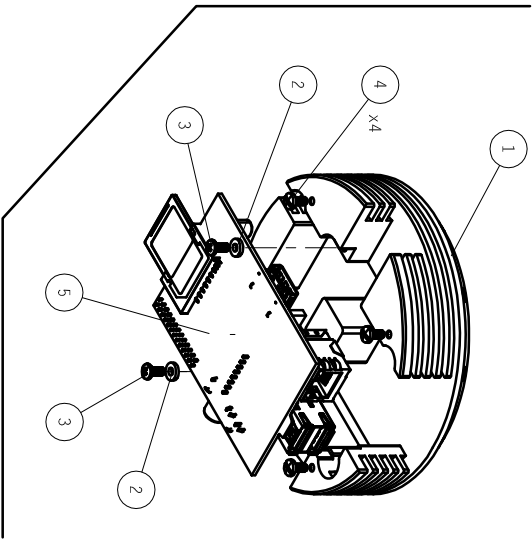
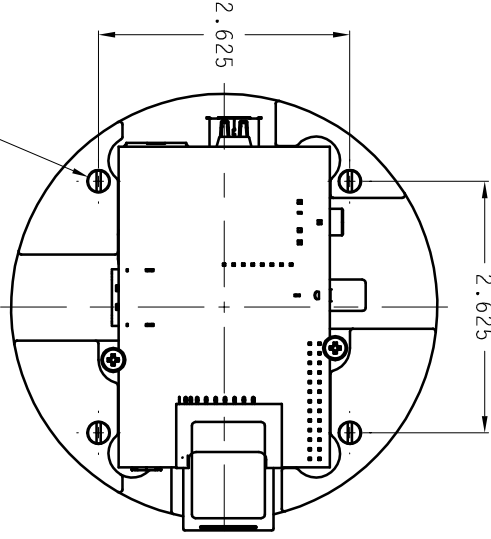
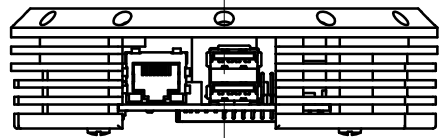
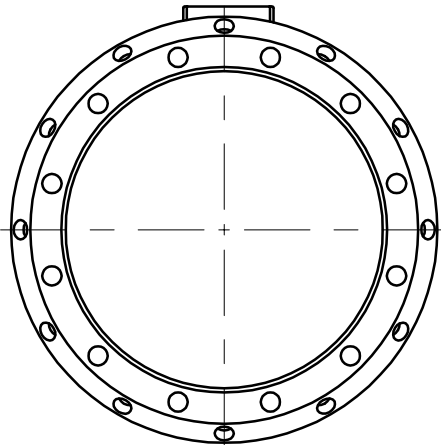
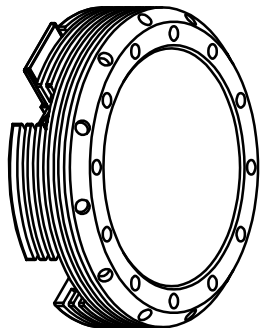
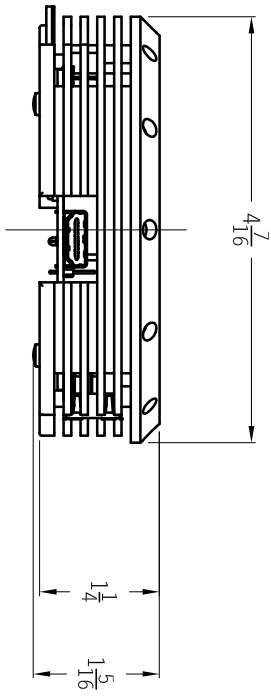


ITEM NO	PART NUMBER	DESCRIPTION	SPECIFICATION	MFG
-2				
QTY	QTY	QTY		
1	11492C10-0	RPI HEATSINK/ENCLOSURE	CLEAR ANODIZED	OSINE
0	11492C10-1	RPI HEATSINK/ENCLOSURE	BLACK ANODIZED	OSINE
1	11492C10-2	RPI HEATSINK/ENCLOSURE	GOLD ANODIZED	OSINE
2	90295A345	WASHER #4 NYLON	BLACK	MCMMASTER
2	91735A102	PAN HD SCREW #4-40 UNC X 1/4 SS	18-8	MCMMASTER
4	94690A106	BINDING HEAD SCREW #4-40 UNC X 1/4	BLACK NYLON	MCMMASTER
0		RASPBERRY PI BOARD		N/A



#4-40 UNC-4 PLACES



HEIGHT (CLASS)	MATERIAL	HEAT TREATMENT	FINISH	NO	BY	DATE	REVISION
1.0		SEE PARTS LIST					OSINE

UNLESS NOTED OTHERWISE ALL TOLERANCES AS FOLLOWS

- Ø - CONCENTRICITY .005 TIR
- 1 - SQUARENESS ±.010 IN 5 INCHES
- ⊕ - HOLE POSITION .008 IN 5 INCHES
- ⊖ - HOLE POSITION .008 IN 5 INCHES
- H - HORIZONTAL ±.003 IN 5 INCHES
- V - VERTICAL ±.003 IN 5 INCHES
- F - FINISHED SURFACES .2500 MIN RA



REV	KS 25OCT13	SCALE	1 : 1	DWG NO	11491C10
DATE				SHEET	1 OF 1



NOTE: THE INFORMATION CONTAINED ON THIS DOCUMENT IS NOT TO BE REPRODUCED OR DISCLOSED WITHOUT THE WRITTEN PERMISSION OF OSINE CORPORATION LIMITED. ALL RIGHTS TO THE INFORMATION CONTAINED ON THIS DOCUMENT ARE RESERVED BY OSINE CORPORATION LIMITED